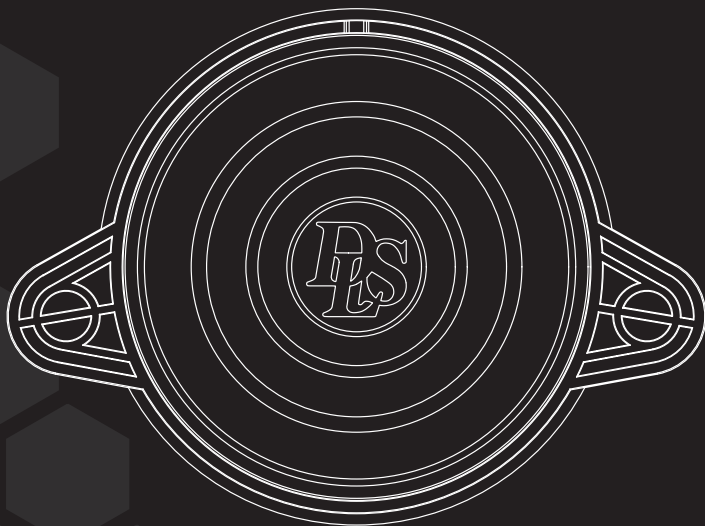


SWEDISH • AUDIO • PASSION



# CRPP-MB3

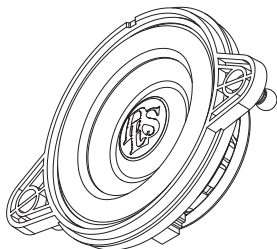
User Manual

Mercedes Sprinter



CRUISE





### Welcome to DLS!

Thank you for buying a DLS Cruise CRPP-MB3. For us, it's all about the sound experience. We care deeply about sound and construction quality. In order for your experience to be as optimal as possible, it is important that you read this manual, preferably before you start your installation. Keep the manual in a safe and accessible place for future reference.

Your speakers must be installed correctly in order to work as intended. Make sure you have all necessary tools nearby before starting and that you are completely confident in how to proceed. If you feel the slightest uncertainty, feel free to take the help of an experienced installer or a car audio dealer.

### Warranty

This speaker is covered by warranty, depending on the conditions in the country where it is sold. If the speaker is returned for service, please include the original dated receipt with the product.

### DECLARATION OF CONFORMITY

DLS plug and play speakers for vehicles are manufactured in accordance with the EU directive EEC 95/54 (72/245/EEC) and are marked with the approval number. They are also marked in accordance with the WEEE-directive 2012/19/EC. The products are also produced in accordance with the EU RoHS directive 2015/863/EU.

# DLS CRUISE CRPP-MB3

## Content

Welcome	1
Parts Included	2
Pre-installation	2
General Info	2
Installation	2
Remove center speaker	3
Important	3
Mount DLS speaker	4
Running-in Time	4
DLS Support	4
Specifications	5
Compatible Car Models	7
Product Markings	8

DLS speakers are engineered by DLS Sweden,  
a part of:

Winn Scandinavia AB  
Elementvägen 15 - SE-702 27 Örebro - Sweden  
Tel: +46 19 20 67 65 - E-mail: info@dls.se  
www.dls.se

**Designed & Sound tuned in Sweden.**



# Parts Included

## Included products:

1pc Midrange speaker

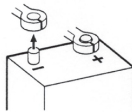
## Included in box:

1pc Cable connector for speaker  
2pcs Terminal crimp connectors  
1pc Adhesive foam for wrapping  
1pc Pry tool  
1pc Manual

# Pre-installation

## Disconnect Battery

Before you start the process of replacing speakers, disconnect and secure the negative terminal from your battery/power source. This will prevent the risk of damaging yourself or the products.



Place the disconnected terminal in a secure and isolated location away from any possible connection belonging to the battery/power source system.

# General Info

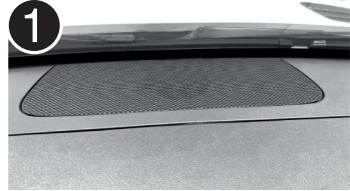
Some sound systems may vary in size of the installed speakers. Make sure that your vehicle has the same size as this speaker, before you start the assembly.

This is a generic mounting instruction. The approach is similar to all of the described car models. Some screws and clips may be placed differently depending on your car model.

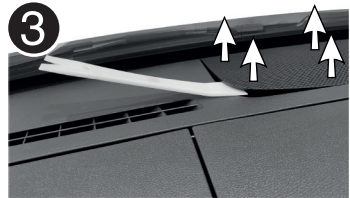
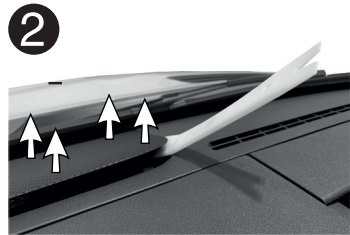
# Installation

## Remove center speaker

Remove the speaker cover by using a Pry tool.



Use the Pry tool and start in the corner of the speaker cover. Be careful and avoid lever marks/nicks when removing the cover.





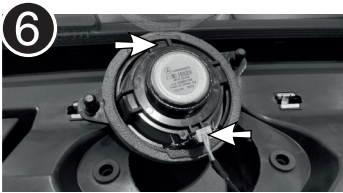
Remove the center speaker by using the Pry tool.



The center speaker is "locked" with plastic plugs, lever the speaker upwards with the Pry tool.



Disconnect the speaker cable(s).



## Important

Some cars are equipped with a dual connected center speaker. If so, it is important to replace it with a new dual connected speaker.

The white connector is for the S.O.S. emergency call assistant and the black connector is for the audio signal.

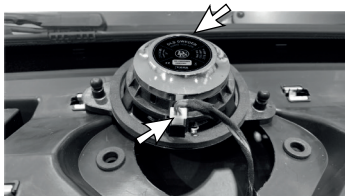
The DLS CRPP-MB3 can handle both single and dual speaker connections.





## Mount DLS Speaker

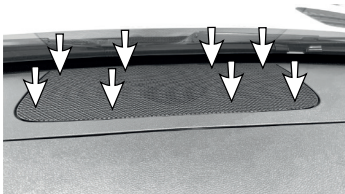
Connect the cable(s) to the DLS speaker. Make sure that the cable(s) locks to the connector.



Press down the "wings" of the speaker to get the plastic points to hook and lock in place. Make sure that the speaker is mounted flat.



Install the speaker cover by pressing it down and make sure that all clips engage.



## Running-in time

Allow the speaker to play for at least 15-20 hours in order to perform at its best. This run-in can be made with tone sweep or with regular music.

Start at a moderate volume and increase the volume step by step during the running-in time. After the 15-20 hour run in session the performance and characteristics of the speaker will be in the correct condition.



## DLS Support

For technical assistance, ask your car audio dealer where the product was sold or the distributor in your country. You can always contact the DLS Help desk in Sweden via e-mail: [info@dls.se](mailto:info@dls.se). Information can also be found on our WEB- site [www.dls.se](http://www.dls.se).

We follow a policy of continuous advancement in development. For this reason, all or part of the specifications and designs may be changed without prior notice.



# Specifications

<b>Article number</b>	<b>CC-CRPP-MB3</b>
Woofer	3" / 80mm with glass fiber cone
RMS Power	55W
MAX Power	110W
Impedance	2x8 Ohm
Sensitivity	83.2 dB 1W/1M
Freq. range	120 - 20000Hz

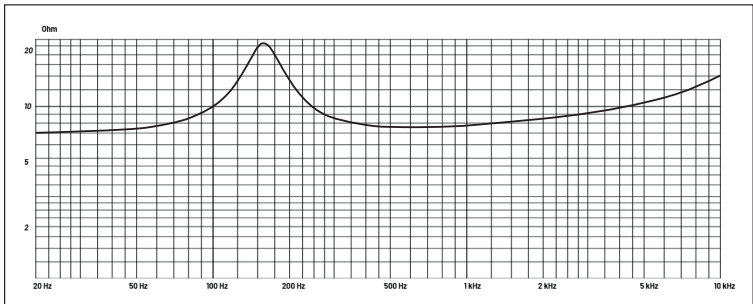
## Technical specifications

Voice Coil Material	CCAW voice coil/ Kapton former
Basket	Glass Fibre Reinforced ABS
Magnet	Neodymium
Cone	Glass fibre
Suspension	Rubber

## Electro-Acoustic Parameters

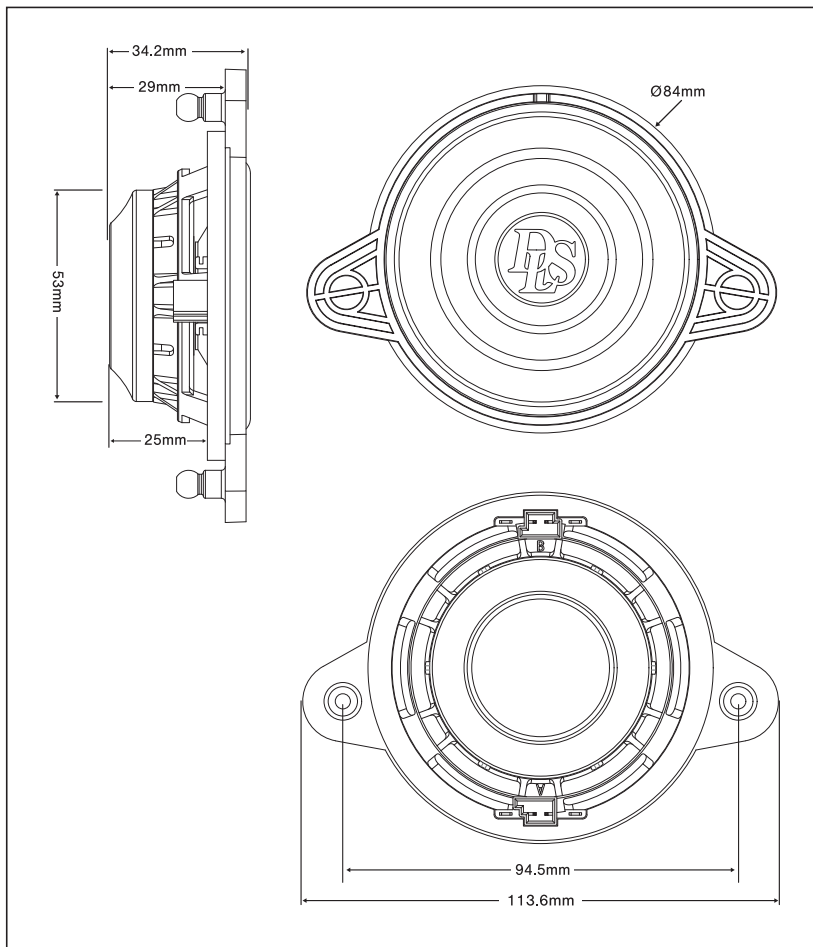
Re	7.6 Ohm
Fs	156.8Hz
Mms	2.75gr
Cms	0.375
Vas	0.48L
Qts	1.17
Qes	1.39
Qms	7.65
Bl	3.84T.m
Spl	83.2dB 1W/1M
Sd	30.2cm <sup>2</sup>

## Impedance vs. Frequency





## Dimensions







# Compatible Car Models

## *DLS Cruise CRPP-MB1.6*

<b>Make</b>	<b>Model</b>	<b>Year</b>	<b>Front speaker</b>
Mercedes	Sprinter W907	2018-	CRPP-MB3*
Mercedes	Sprinter W910	2018-	CRPP-MB3*

\*CRPP-MB3 midrange speaker has been developed to be installed in the center of the dash board for the following car models.



# Product Markings



The crossed-out wheeie bin symbol means that the product, literature and packaging included must be taken to separate collection at the end of their working life. Do not dispose of these products as unsorted municipal waste: take them for recycling. For info on your nearest recycling point, check with your local waste authority.



This product has been granted with the CE certification mark to show that the product follows the health, safety, and environmental protection standards for products sold within the European Economic Area (EEA).



DLS products comply with the relevant provisions of the RoHS Directive for the European Union. In common with all Electrical and Electronic Equipment (EEE) the product should not be disposed of as household waste. Alternative arrangements may apply in other jurisdictions.



DLS is a global partner of the European Mobile Media Association, an organisation that focus on promoting the custom made mobile media installations to consumers.

We follow a policy of continuous advancement in development. For this reason all or part of specifications & designs may be changed without prior notice. We reserve for possible typos, factual or numeric errors that may have been printed on any products, package designs, user manuals and/or other included accessories.





CRUISE